

GT GOLD

SADDLE

The Best BC Gold Discovery of 2017

AWARDED THE PRESTIGIOUS
MINES AND MONEY INTERNATIONAL
"EXPLORATION DISCOVERY AWARD" FOR 2017

FACT SHEET



www.gtgoldcorp.ca

Discovery Facts

- ❖ Two key discoveries achieved at Saddle in 2017:
 1. High-grade epithermal gold-silver vein system, and
 2. Potentially rich, large-scale, Cu-Au-Ag porphyry
- ❖ Located on the Tatogga property, Golden Triangle, northern BC
- ❖ Excellent access: just 10 km from Hwy 37
- ❖ Grid power to property limits
- ❖ 2 targets: Saddle South and Saddle North
- ❖ Saddle South: Drilled 28 RC and 58 DDH in 2017 for 15,998 m - intercepts along 1,000 m of E-W strike to >500 m down-dip from surface
- ❖ Abundant high-grade intercepts with highs to 51.53 g/t Au over 6.95 m in hole 7
- ❖ Saddle North: 6 holes drilled in 2017 for 1,713 m, resulting in high-grade vein and porphyry Cu-Au-Ag intercepts
- ❖ Rich Cu-Au-Ag porphyry-style grades intercepted in last hole of 2017 program (TTD064)
- ❖ Continuous Cu-Au-Ag mineralization from surface in hole 62, strengthening steadily to EOH at 234 m – open
- ❖ Potential 'Red Chris' style
- ❖ Summer 2018 follow-up program in planning



GT Gold Capitalization Table	
Basic Shares	82,190,935
Warrants	4,098,251
Options	4,883,334
FD Shares	91,652,520
Share Price (Jan. 12 Close)	\$ 0.63
FD Market Cap	\$ 57,741,088
Cash (As at Jan. 12)	\$ 3,200,000
In-Money Warrants	\$ 819,650
Enterprise Value	\$ 53,721,437

Corporate Facts

TSXV: GTT (Jan. 12, 2018)

Management:

Kevin Keough, Pres & CEO
 Charles Greig, VP Exploration
 Mark Santarossa, CFO & VP CD
 Jo-Anne Archibald, Corp. Scty.

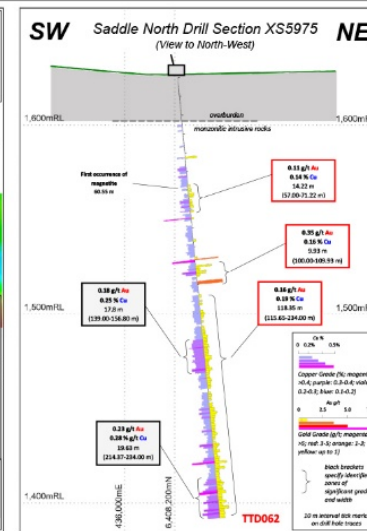
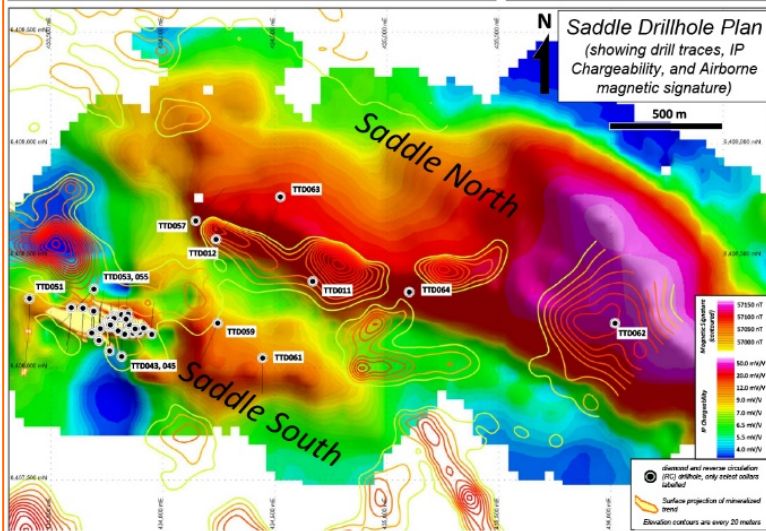
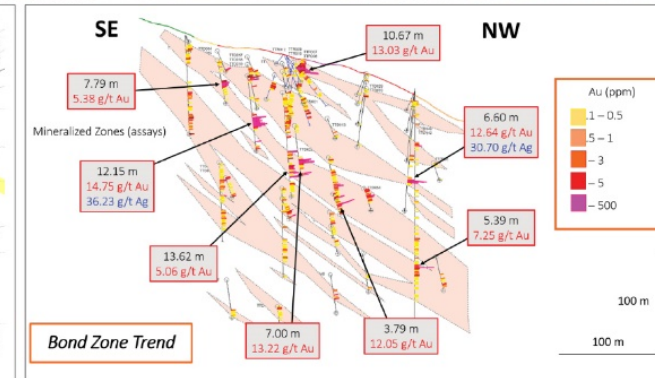
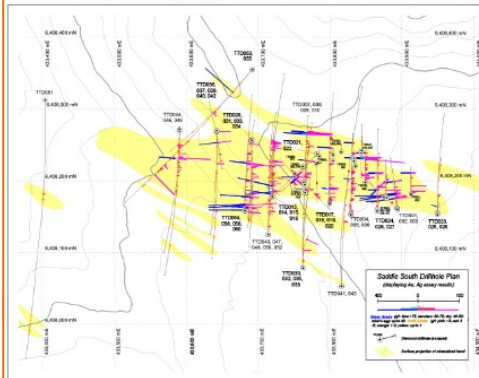
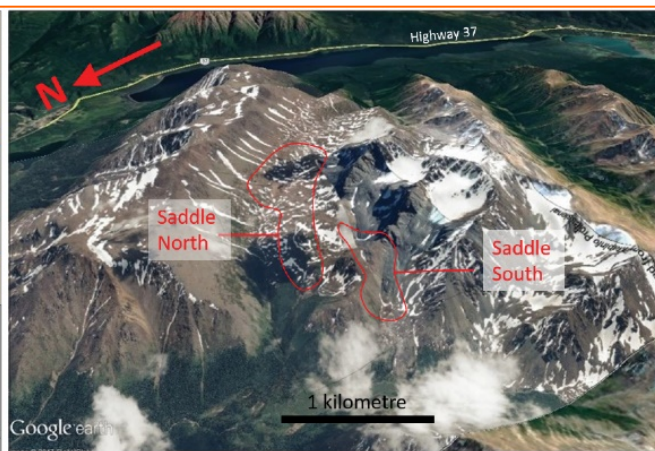
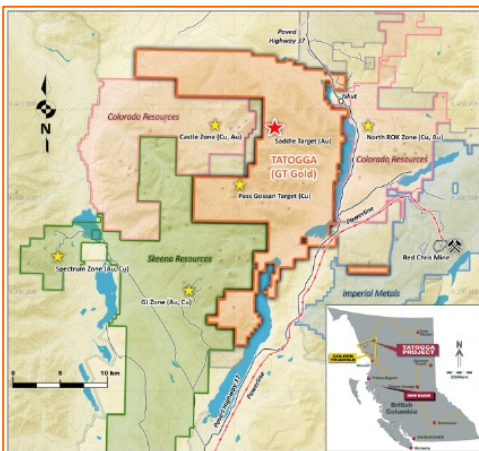
Directors:

Ashwath Mehra, Exec. Chairman
 Kevin Keough
 Charles Greig, M.Sc., P.Geo.
 John Pallot
 Taj Singh, M.Eng., P.Eng.

Qualified Person:

Charles J. Greig, M.Sc., P.Geo., Vice President, Exploration for GT Gold and the Company's Qualified Person as defined by NI 43-101, has reviewed and approved the technical information in this fact sheet.

GT GOLDCORP



Major Shareholders:

- Management & Directors 17.1%
- 1832 Asset Management 7.0%
- Mackenzie Financial 2.7%
- Old Mutual 1.2%

FACT SHEET